

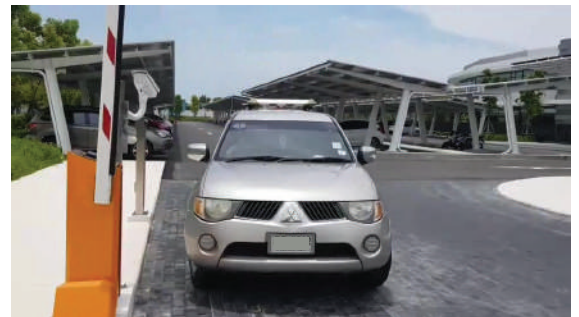
AX-306A



High-speed Barrier Gate

Technical Parameters

Standard color: orange, gray
 Chassis size: 350x350x1050 mm
 Can be equipped with: octagonal pole below 4 meters
 Speed: 1.5~4 seconds
 Ambient temperature: -25°C~60°C
 Relative humidity: 5%~95%
 Voltage: 200V/50Hz
 Remote control distance: 30m
 Dimensions: 405x292x1019mm
 Installation size: 235x235x172mm
 Power: 150W
 Gate center height: 880mm
 Gate type: standard straight rod
 Communication protocol: RS-485 interface, up to 1200 meters
 Working power supply: AC220V±10%V (50Hz)



High-speed Gate Performance Characteristics

Turbo drive, simple structure, durable, stable and reliable
 State-of-the-art balancing mechanism ensures smooth, balanced operation
 Modular design, standard terminal block output strong and weak electrical partition separation, full circuit non-contact control, ensuring reliable operation
 An anti-mite control system is added to ensure the safety of the vehicle, and the emergency department is manually lifted and lowered;
 Control input/output sections use optocoupler relays to block electrical shock
 The gate lift time is only 1.5 seconds
 3 million service life, no pollution, no wear, no need for lubricant maintenance
 The ground sense coil controls the automatic drop lever after the vehicle has been tested, and has the function of preventing the brake.

